

FREEHOLD

House - Terraced

# LICHFIELD ROAD, DAGENHAM, RM8 2AX

Guide Price

£375,000

## FEATURES

- CHAIN FREE
- Lounge
- First Floor Bathroom Suite
- uPVC Double Glazing
- Two Bedrooms
- Fitted Kitchen
- Gas Fired Central Heating
- Rear Garden with Summer House



**STEPS**

Estate Agents

# 2 Bedroom House - Terraced located in

## Entrance

Via uPVC door to porch

## Porch

6'5" x 3'0"

Dual aspect uPVC windows to side. Further door to

## Lounge

19'3" x 10'8"

uPVC windows to front and rear. Laminate effect wood flooring. Double radiator.

## Kitchen

13'0" x 7'6"

Range of fitted wall and base units with roll top work surfaces. One and a half bowl single drainer sink unit with mixer taps. Tiled splash backs. Spaces for washing machine, fridge freezer, cooker, tumble dryer and dishwasher. Understairs storage area. uPVC window to rear. uPVC door to garden.

## Landing

Access to loft. Built in storage cupboard. uPVC window to front. Doors to

## Bedroom One

13'1" x 10'7"

uPVC window to rear. Double radiator. Fitted wardrobes.

## Bedroom Two

13'1" x 7'10"

uPVC window to rear. Double radiator.

## Bathroom

8'7" x 5'10" max

L-Shaped suite comprising of. Panel enclosed bath with mixer taps and shower. Wash hand basin with mixer taps and storage under. Low level WC.

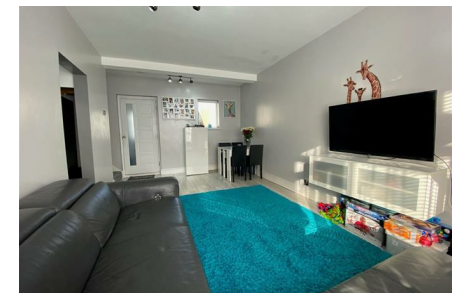
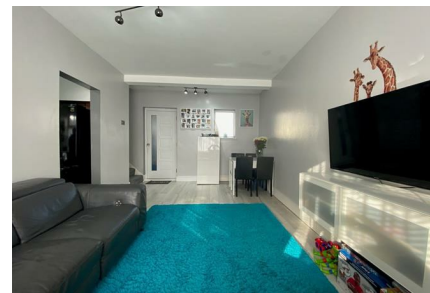
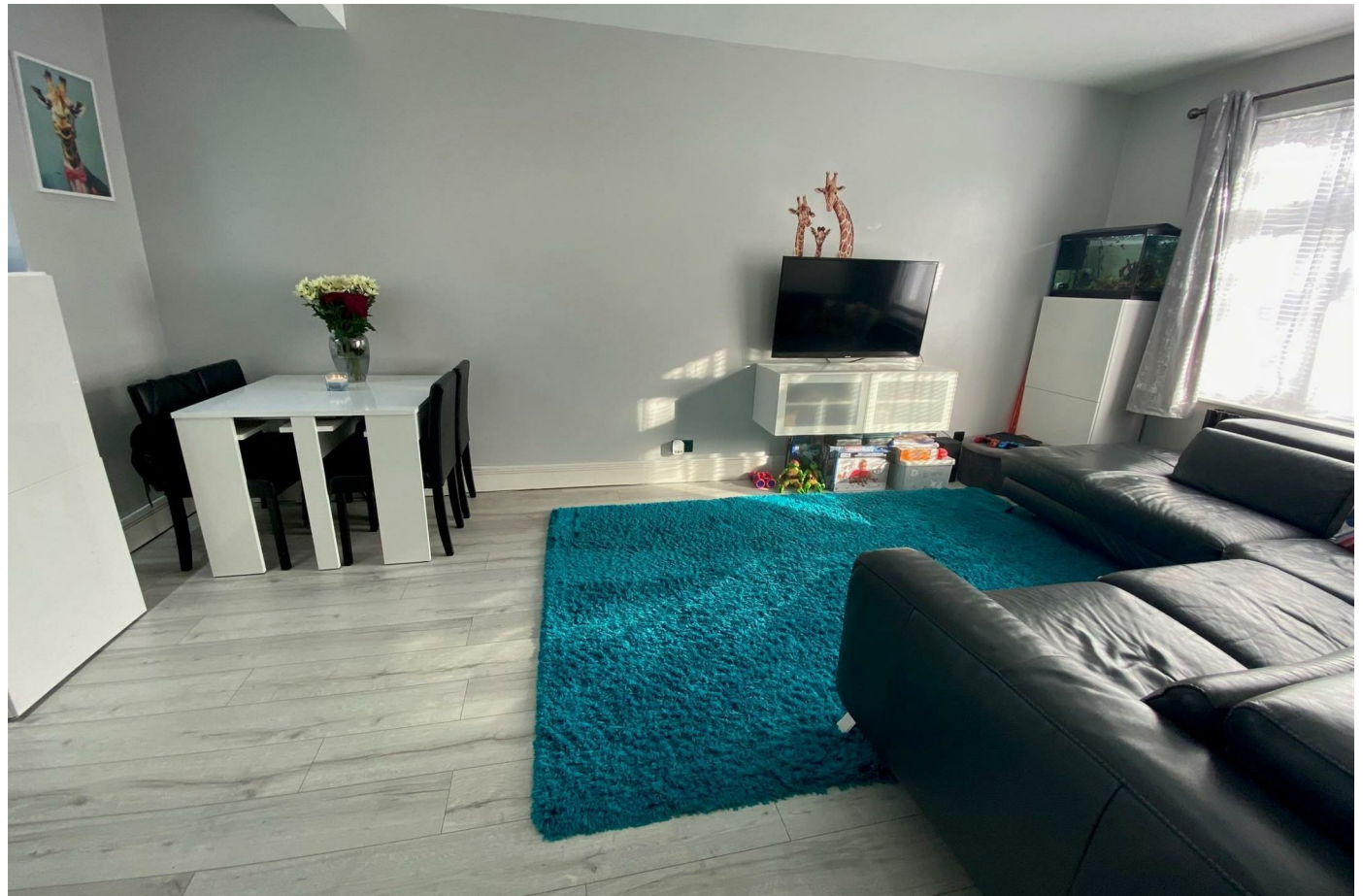
Chrome effect heated towel rail. Tiled walls. Extractor fan. Two obscure glazed uPVC windows to front.

## Rear Garden

31'3" approx

Commencing with a decking area. Artificial lawn. Wooden summer house to rear.

We routinely refer potential purchasers to Move with Us Ltd. It is your decision whether you choose to deal with Move with Us Ltd. In making that decision, you should know that we receive an annual payment benefits from Move with Us Ltd, equating to approximately £314.48 per referral.

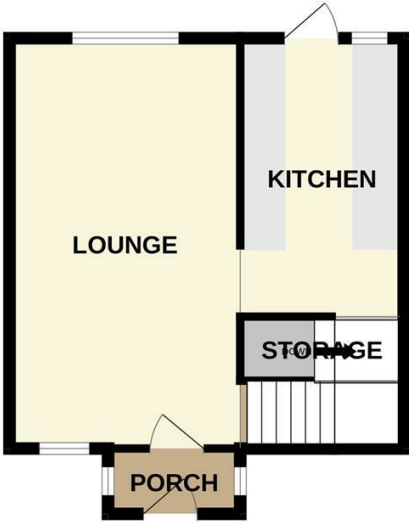


DAGENHAM SALES | STEPS ESTATE AGENTS, 298 HEATHWAY, DAGENHAM, ESSEX, RM10 8LU

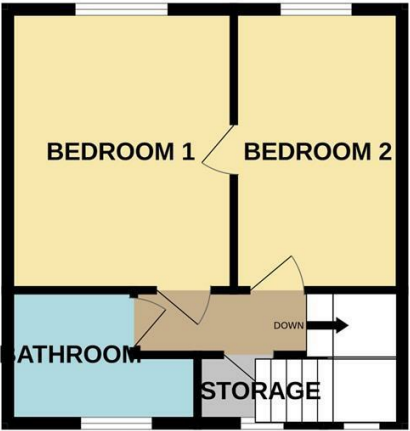
Call us on  
**020 8593 5933**  
[dagenham@steps.me.uk](mailto:dagenham@steps.me.uk)  
[www.steps.me.uk](http://www.steps.me.uk)

**Council Tax Band**  
**C**

GROUND FLOOR



1ST FLOOR



Whilst every attempt has been made to ensure the accuracy of the floorplan contained here, measurements of doors, windows, rooms and any other items are approximate and no responsibility is taken for any error, omission or mis-statement. This plan is for illustrative purposes only and should be used as such by any prospective purchaser. The services, systems and appliances shown have not been tested and no guarantee as to their operability or efficiency can be given.  
Made with Metropix ©2025

Energy Efficiency Rating		
	Current	Potential
Very energy efficient - lower running costs		
(92 plus) <b>A</b>		<b>87</b>
(81-91) <b>B</b>		
(69-80) <b>C</b>	<b>73</b>	
(55-68) <b>D</b>		
(39-54) <b>E</b>		
(21-38) <b>F</b>		
(1-20) <b>G</b>		
Not energy efficient - higher running costs		
England & Wales		EU Directive 2002/91/EC

Agents Note: Whilst every care has been taken to prepare these particulars, they are for guidance purposes only. All measurements are approximate and are for general guidance purposes only and whilst every care has been taken to ensure their accuracy, they should not be relied upon and potential buyers are advised to recheck the measurements.

**STEPS**  
Estate Agents